



MATTHIAS FITZ

Works 1997–2007 [selection]

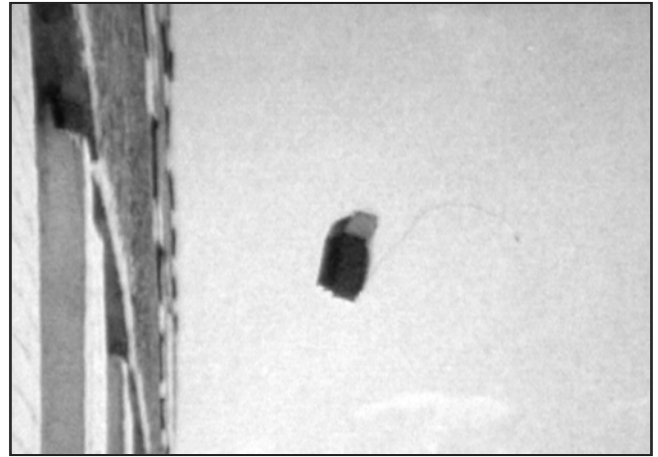
Das Wunder | 1997

video • Beta SP • 02'57"

"Volkstümlich heißt ja nicht dumm!..."

A television set throws itself off a rooftop and survives all the mile-stones of its life.





The time has come: Meister Proper is common knowledge. Nina Hagen says ha ha, because popular isn't the same as stupid. Wim Thoelke cries Hamburg with God's help. Neil Armstrong shoots and scores the deciding goal. The candidate has 100 points: Love, love, love...and television continues its search for cultural opportunities.

o.T. | 1997

photography • analog • series, 4-part (#1, #4) • *Alu-Dibond, acrylic glass* • 60x90

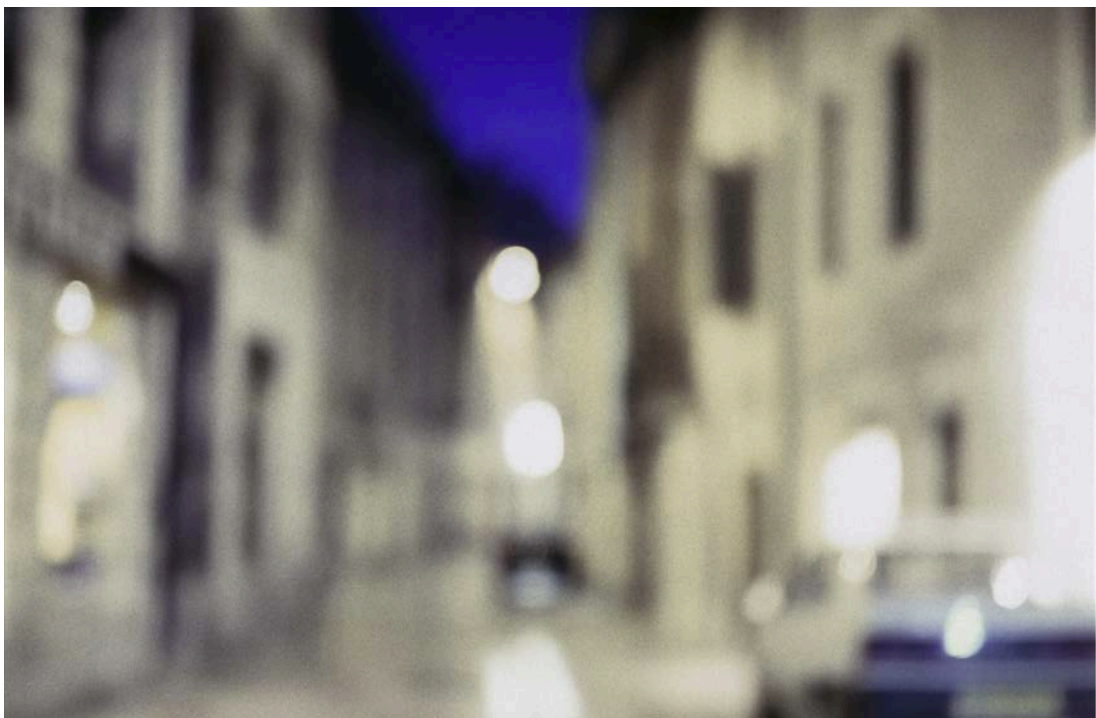




o.T. | 1997

photography • analog • series, 4-part • *Alu-Dibond, acrylic glass* • 60x90





Fenster zum Hof 1998

slide installation



measures: *depending on the location*

material: *slide projector, foil, slide, window*



A room with a window.

During the day the room is lit by the diffused light coming through the dull window panes. Nothing can be seen from the yard that lies beyond the window. Only at dusk, when the room begins to darken, does it become apparent just what is disappearing: The view of the yard lit by daylight.

Cymatic Circuit | 1999

interactive object



Cymatic Circuit is a closed system of various physical sizes which influence one another. The circuit regulates itself, can be interrupted at any point but after a short time, it always goes back to its normal state.

The apparatus quietly buzzes whilst creating images, only to use them up for its own consumption almost immediately.



...a loudspeaker filled with water is connected to an audio signal, so that changing structures can be seen on the water's surface. This is recorded onto a miniature camera and returned to a cathode-ray-tube. Light emissions from the tube are transformed into an electronic signal using a light-voltage-transformer. This signal is then sent to the loudspeaker via an audio amplifier...

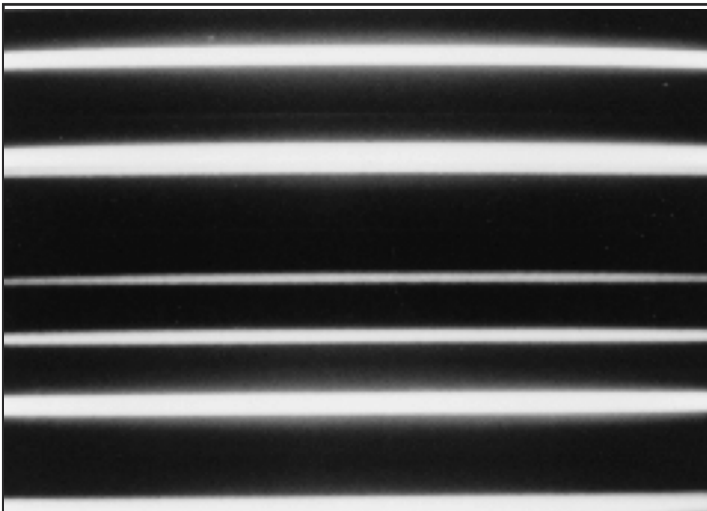
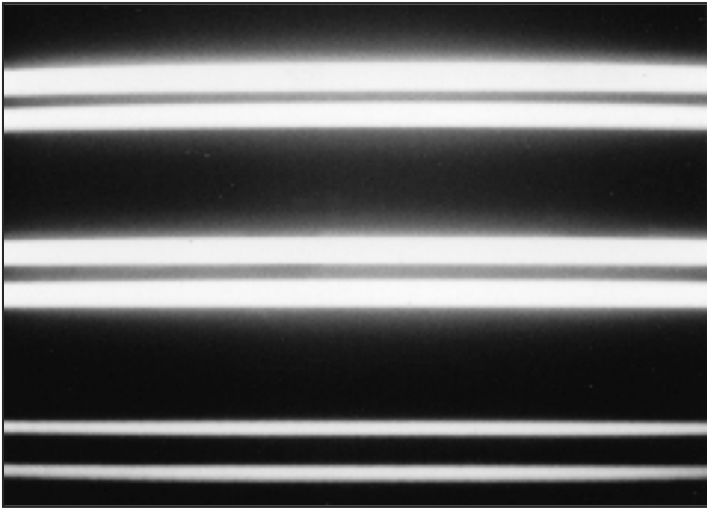


measures:: $\approx 100 \times 40 \times 40 \text{ cm}$

material: 5 inch b/w picture tube; mini camera b/w; audio amplifier; tripod; loudspeaker; light-voltage-transformer; power supply units and cables

(SoundToFrame 1.2) LULLABY | 1999

video • Beta SP • 10'09"



(SoundToFrame 1.2) LULLABY is a form of sleep meditation. The theme is the German lullaby „Guten Abend, Gute Nacht.“ (Good evening, good night)

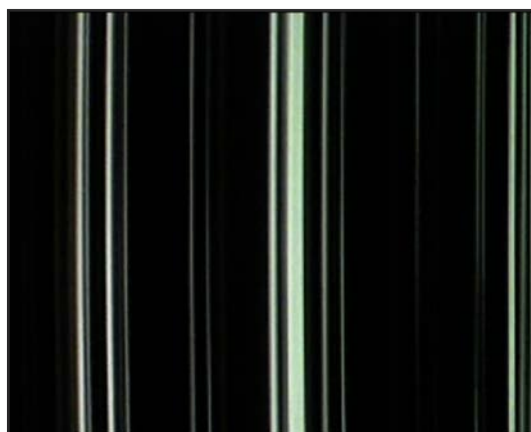
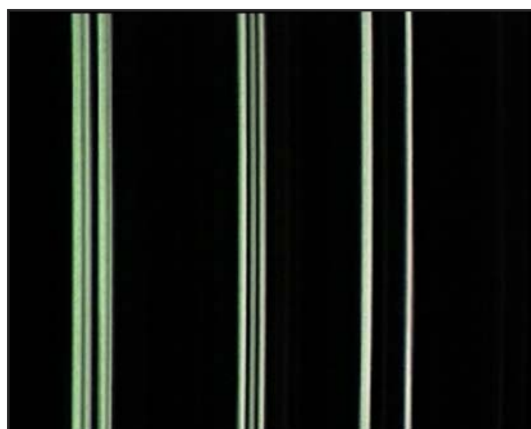
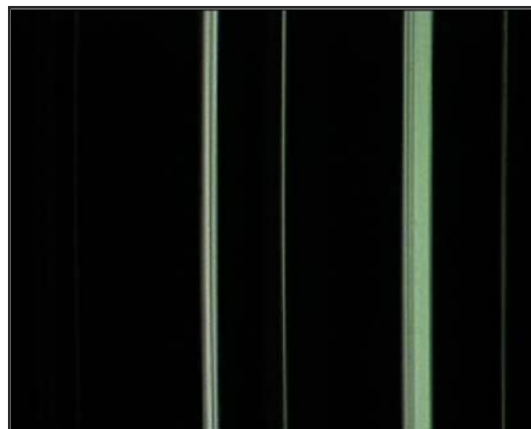
"Guten Abend, gute Nacht, mit Röslein bedacht,
mit Nelklein besteckt, schlupf unter die Deck.
Morgen früh, wenn Gott will, wirst du wieder geweckt,
Morgen früh, wenn Gott will, wirst du wieder geweckt."

Guten Abend, gute Nacht, von Englein bewacht,
die zeigen im Traum dir Christkindleins Baum.
Schlaf nun selig und süß, schau in Traums Paradies."

SoundToFrame deals with the direct relationship between image and sound. Each individual note in these videos is allocated to a particular bar code combination.

(SoundToFrame 2.1) NATIONAL ANTHEM | 1999

video • Beta SP • 5'06"

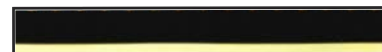


(SoundToFrame 2.1) NATIONAL ANTHEM visualises the German national anthem as a vertical bar code.

Each individual note in these videos is allocated to a particular bar code combination.

Black Box 2.1 | 1998–2000
by MaGu (Matthias Fitz; Gunter Krüger)

video • Beta SP • 14'20"

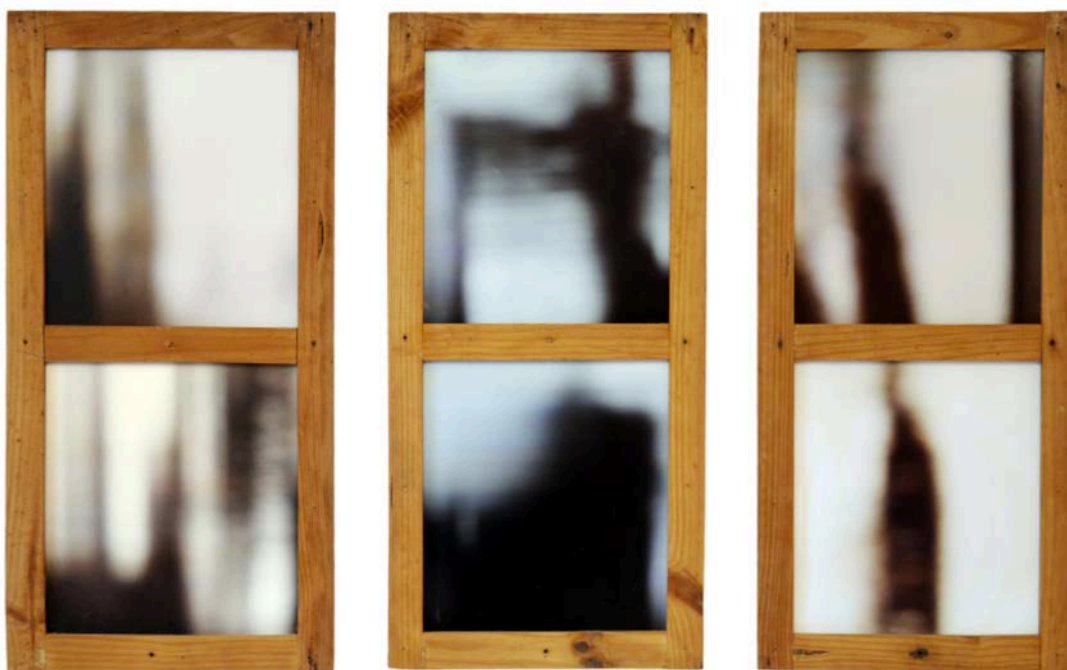


Black Box is a public research project which is not orientated around results. The topic of research is the film and its function as a boundary between reality and its representation.

With **Black Box 2.1**, MaGu presents entirely black film segments taken from international filmproductions. **Black Box 2.1** is a collection of classics from the history of cinema with images removed and shown in a compressed form.

Canal + | 2000

photography • analog • 3x2-part work



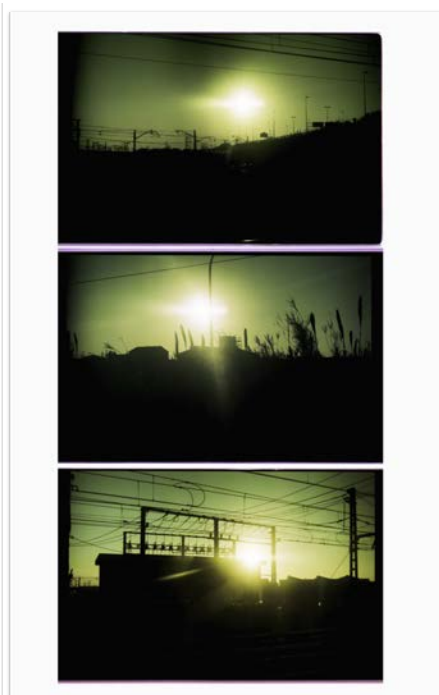
6 photographs in found wood framing – frame measures: 75cm x 36cm

longtime exposure from a encoded telestation, Spain

B|B | 2000

photography • analog • 12x3-part • foam board • 15x24

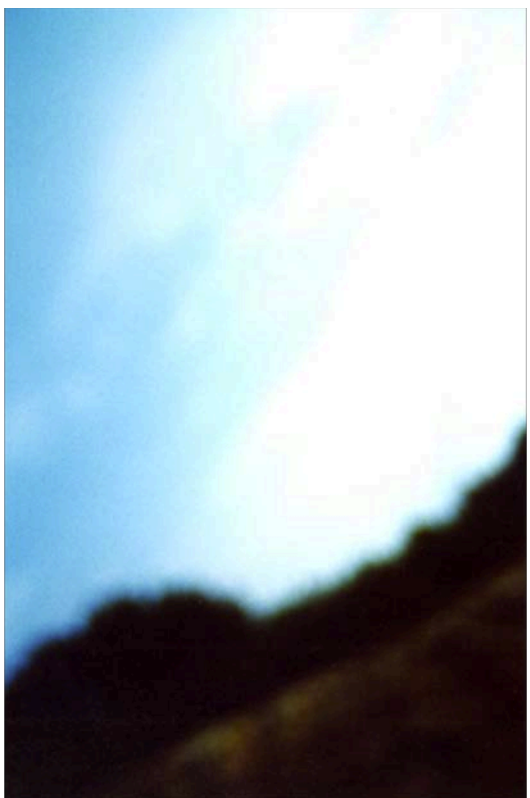




One complet film, 36 photographs

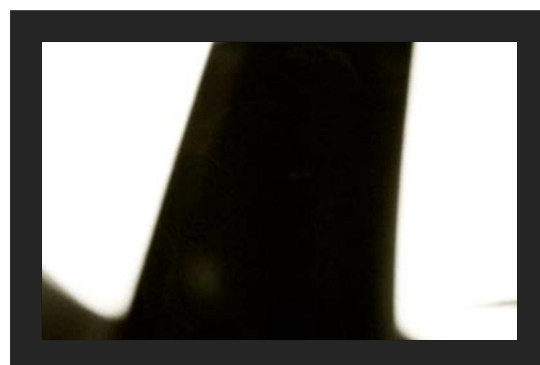
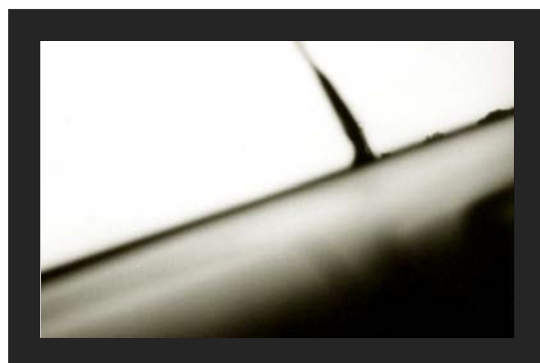
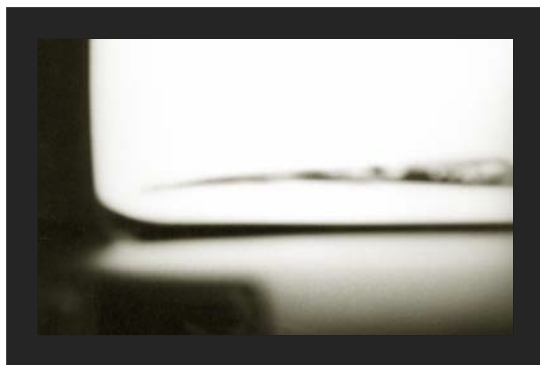
B | 2000

photography • analog • series, 4-part • *Alu-Dibond*, acrylic glass • 60x90



car | 2000

photography • analog • series, 5-part
wood framing, black, each 60x40



Kymatische Kinemathek | 2001

interactive video sound installation

Kymatische Kinemathek is an installation for viewing international cinema production. Its audience can choose from a collection of about 100 productions and watch the chosen film on one of five tables. Sound can be heard through ordinary headphones, however, the electronic signal for the picture is transmitted using a speaker filled with water. Frequency and amplitude changes in the signal cause the structures in the water's surface to continuously change. Sometimes concrete, but more often abstract correspondences between the sound of the film and the reaction of the water occur.





measures: *exhibition space 40 – 80 qm*

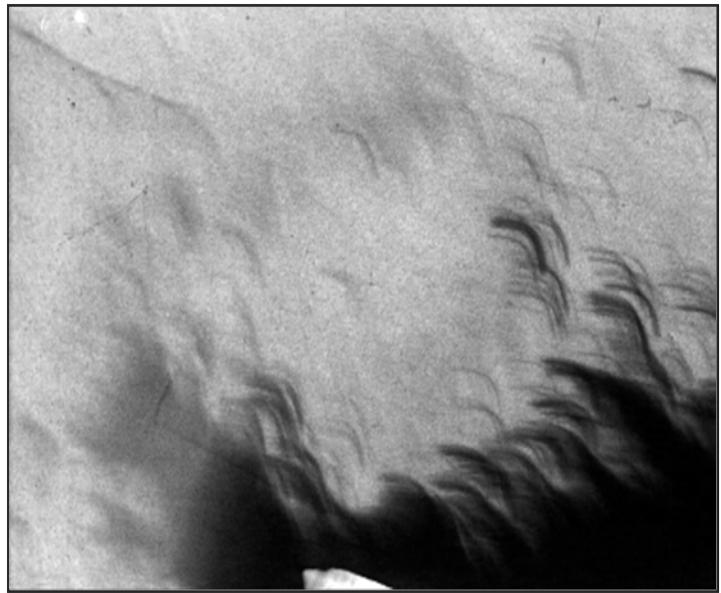
material: *5 video players (VHS); 5 loudspeakers; 5 headphones; 3 audio amplifiers; power supply units and cables; 5 tables; 5 chairs; 1 shelf; 5 water carafes; water; 100 VHS tapes*

unalogy nº1 leben ist... | 2001

video • Beta SP|16mm • 3'11"

unalogy nº1 leben ist... is a co-production with experimental Spanish musician, Ferran Fages.

It was shot on a defective 16mm camera, the film was developed in a plastic bucket and was put together with sound fragments produced from broken vinyl records and sequences from the single 'Aleman para extranjeros'.



waschküche | 2002

photography • analog • series, 3-part (#1, #2) • *Alu-Dibond, protective foil matt* • 60x90





N.T.R.(Natural Tube Radio) | 2002

interactive video sound installation

N.T.R. concerns itself with the electro magnetic rays which constantly surround us. In addition to the visible waves of light, there are also many other types of waves in the electromagnetic spectrum (radio,television, mobile phone communication...)

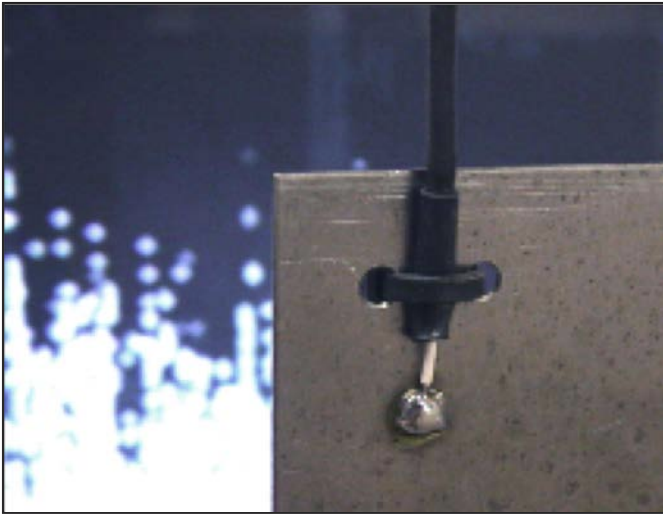
One example is the 50Hertz emissions of our power supply system, which can be heard by touching the metal plates.



"(...) many audiophiles will argue that tubes give a richer, more natural sound."

"(...) tube systems are less susceptible to brown-outs and electrical spikes."

Gateway Music, Williams, Arizona, USA



With the help of cathode-ray-tubes **N.T.R.** creates a landscape of electromagnetic sound.

A picture tube, like every natural light source, emits not only visible electromagnetic waves, but also x-rays and low frequency waves such as ELF (Extreme Low Frequency) and VLF (Very Low Frequency). The metal plates in front of the monitors receive these low frequency rays and return them, amplified, as sound.



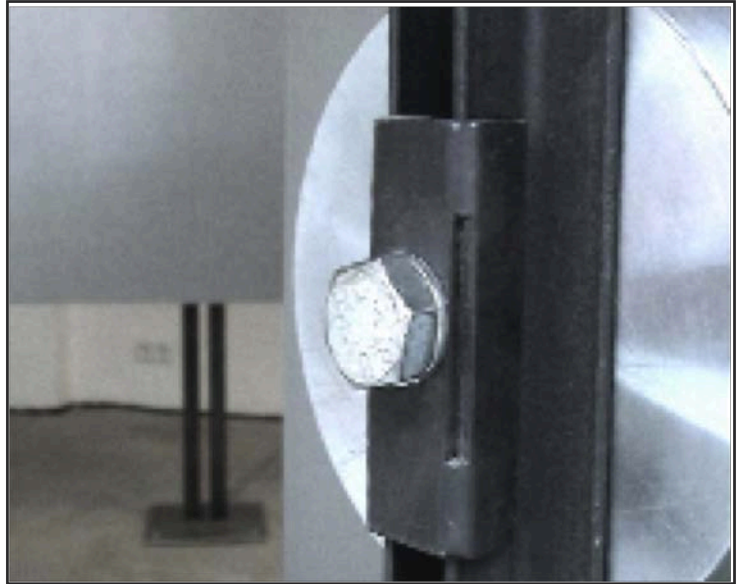
measures: *exhibition space 30 - 60 qm*

material: *4 monitors (25inch); 4 metal plates; 2 audio mixers; 2 noise gates / expander; 4 activ loudspeakers*

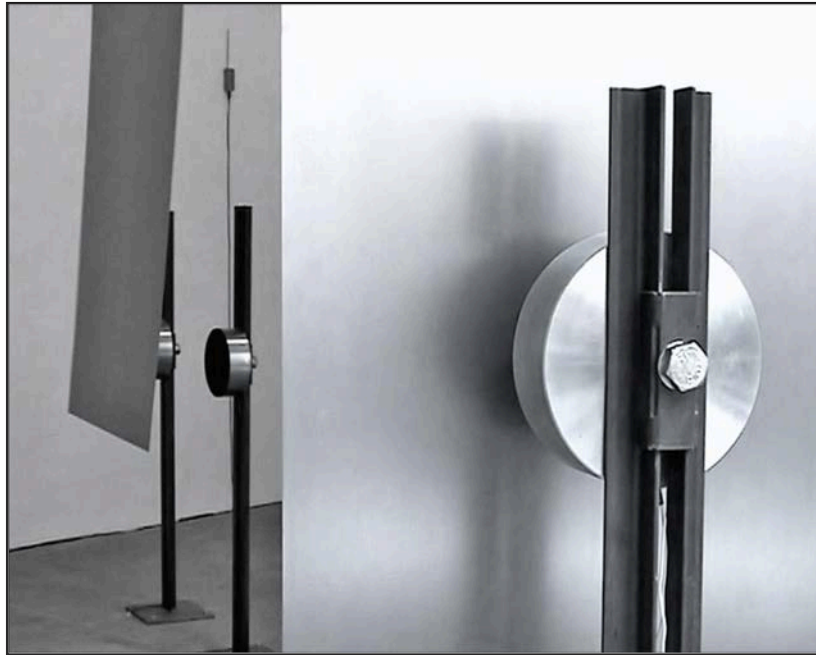
interactive sound installation

MobileMinder uses the electro magnetic rays of a mobile phone to activate electro magnets that cause the metal plates to swing and in turn cause them to create sound.

A mobile phone emits pulsed electro magnetic waves with digital information. Even a mobile phone that is not being used sends out a signal indicating its location every 30 to 90 minutes.



With specific receivers that are sensitive to mobile phone signals, the rays emitted from mobile phones being used in the surrounding area can be captured. This signal is amplified and subsequently turned into a control signal which is sent to the electro magnet. Depending on the reception, the varied movements of the metal plates cause different sounds in the room.



MobileMinder is realized with kindly support of

M&E GmbH

Magnettechnik/Elektromechanik REMSCHEID

measures: *exhibition space 30 – 60 qm*

material: *4 metal plates 1 x 1000 x 1600 mm; 2 electro magnets 24V 250 mm Ø; 4 electro magnets 24V 150 mm Ø; 6 metal stands; 6 GSM receivers for cell phone radiation; electronic controls; 4 power supply units 24V, 10A*

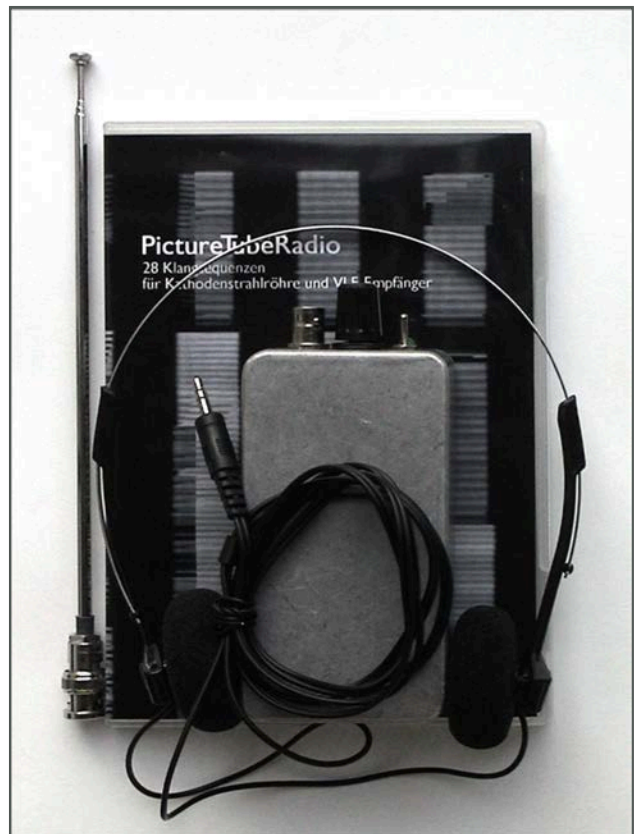
PictureTubeRadio | 2003–2004

multiple (DVD with VLF-receiver) | **video sound installation**

The cathode-ray-tubes in our television sets emit electromagnetic rays in very low frequency fields. Different images produce different sounds. These patterns are explored in PictureTubeRadio. Within this context, up until now the television is a completely unresearched sound instrument.

28 sound sequences for cathode-ray-tubes and VLF-Receiver

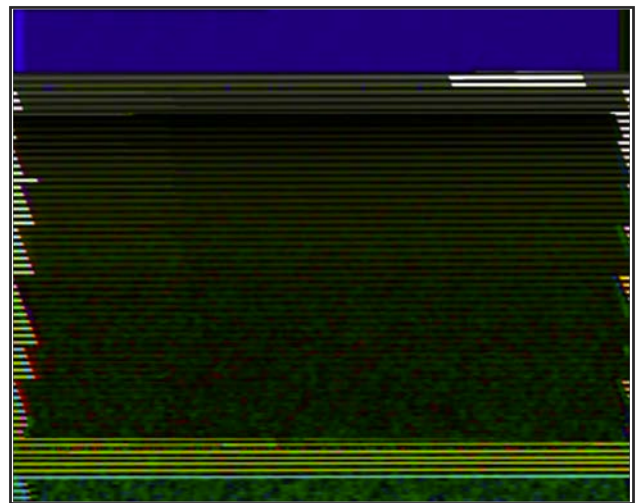
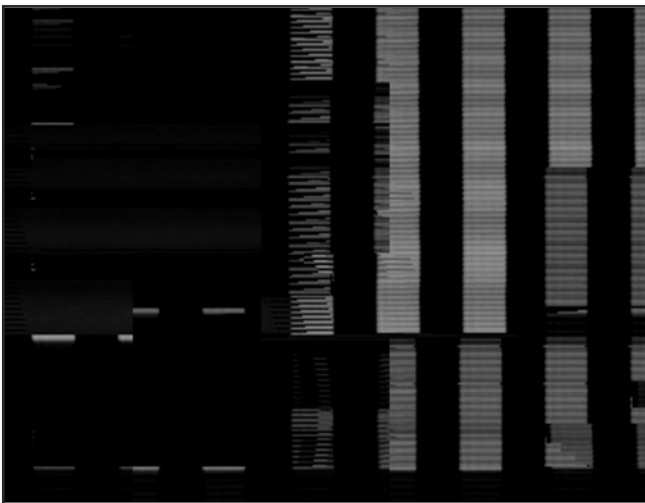
...is a collection of electromagnetic sound fragments for a cathode-ray-tube and VLF-Receiver. The DVD consists of 28 sequences made up of unstable digital and analogue video signals, exploring the electro-magnetic sound properties of a cathode-ray-tube in a tele-vision set.



measures: *exhibition space 15 – 30 qm* | material: *DVD, VLF-receiver*

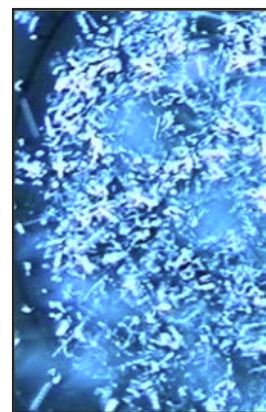
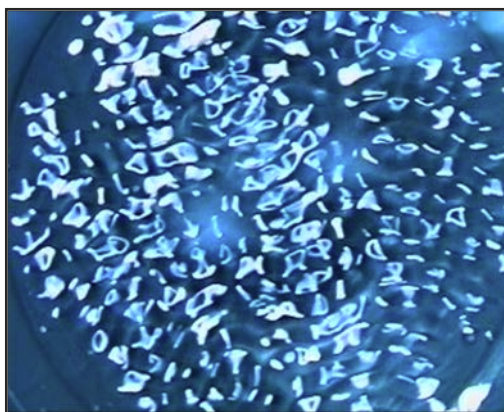
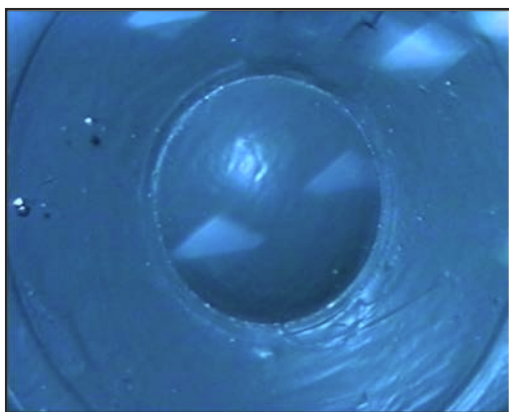
Composition for 4 cathode-ray-tubes and VLF-Receiver

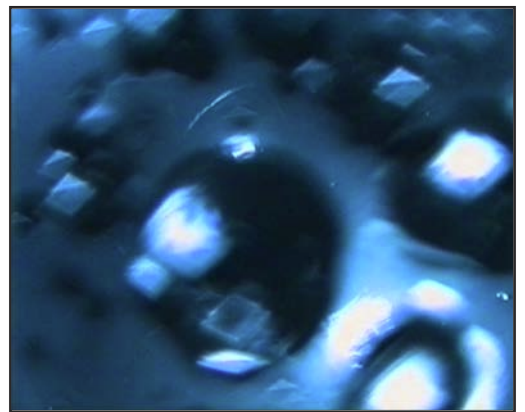
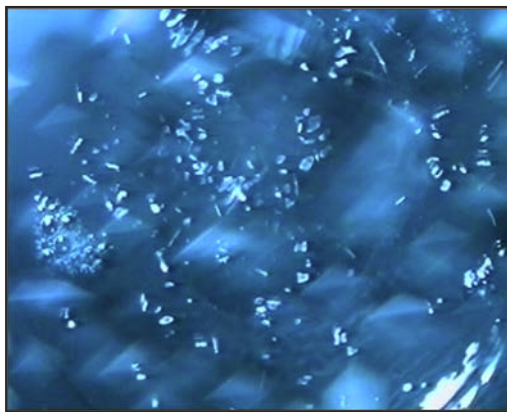
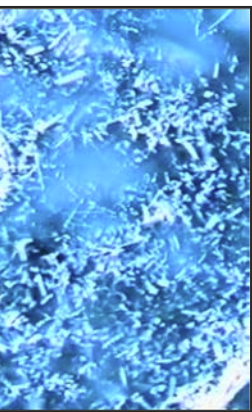
...is a 4 channel sound arrangement for cathode-ray-tubes and a VLF-Receiver. On four different monitors, coordinated video sequences play over one another to form one electromagnetic sound-composition. By altering their position within the room, the viewer can influence the modulations of each individual channel.



measures: *exhibition space 25 - 40 qm*

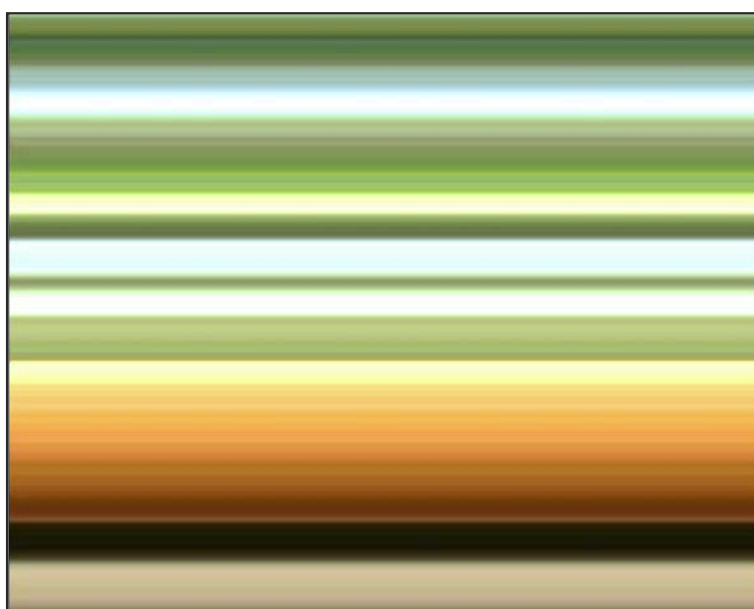
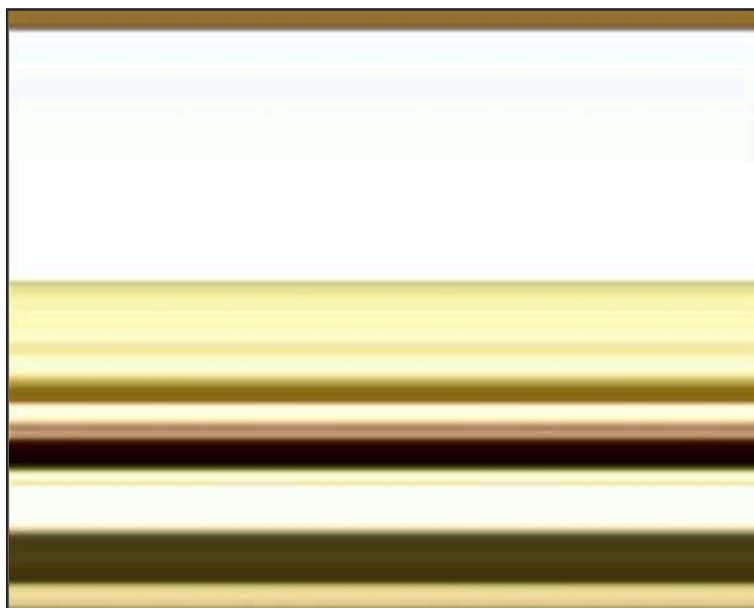
material: *4 DVD's; 6 VLF-Receivers; 4 monitors (29 inch); 4 DVD player (synchronized)*

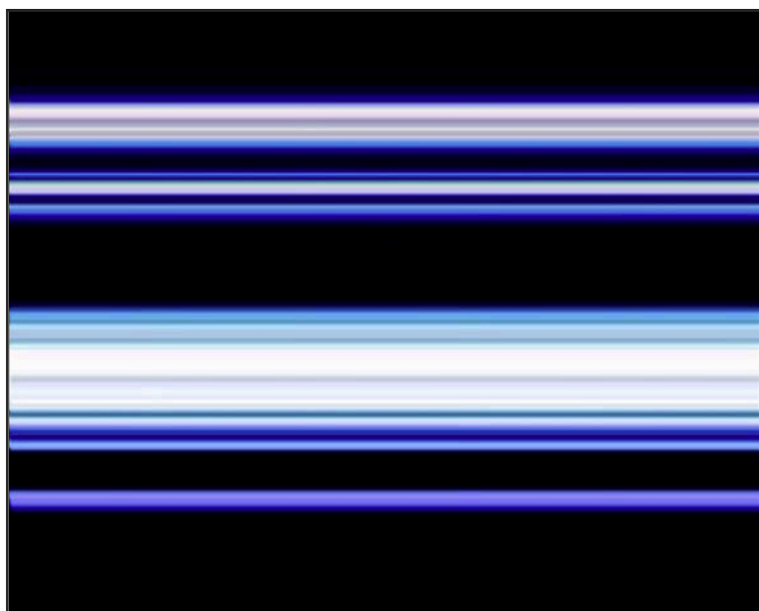
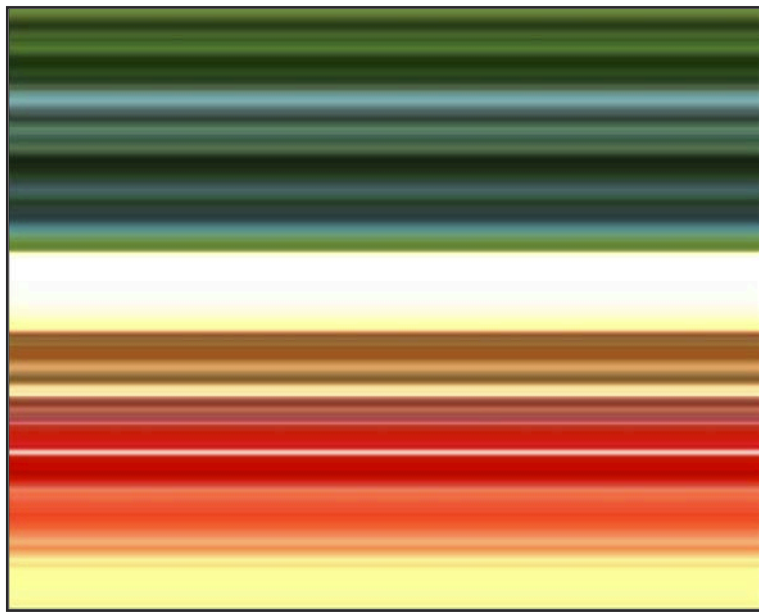
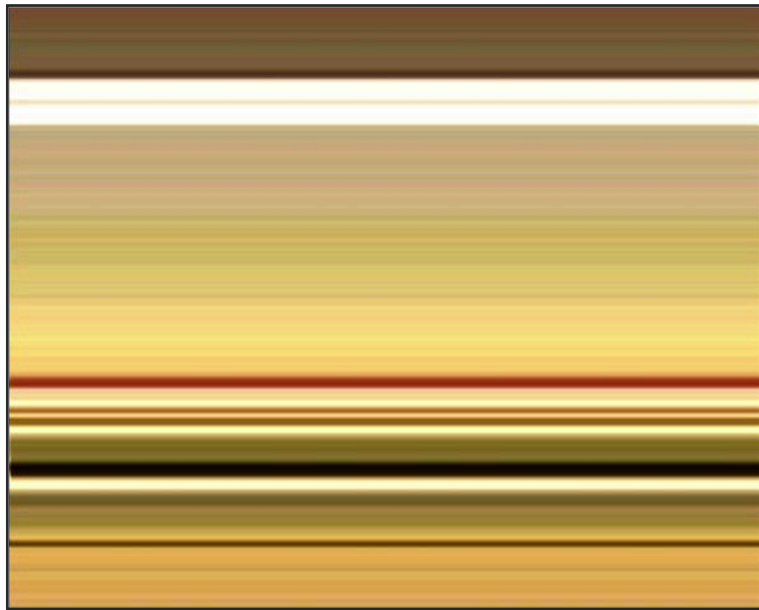




N°9 is a realtime documentation of the emptying of a water filled loudspeaker, playing the endless groove of the LP from the 9th from Beethoven.

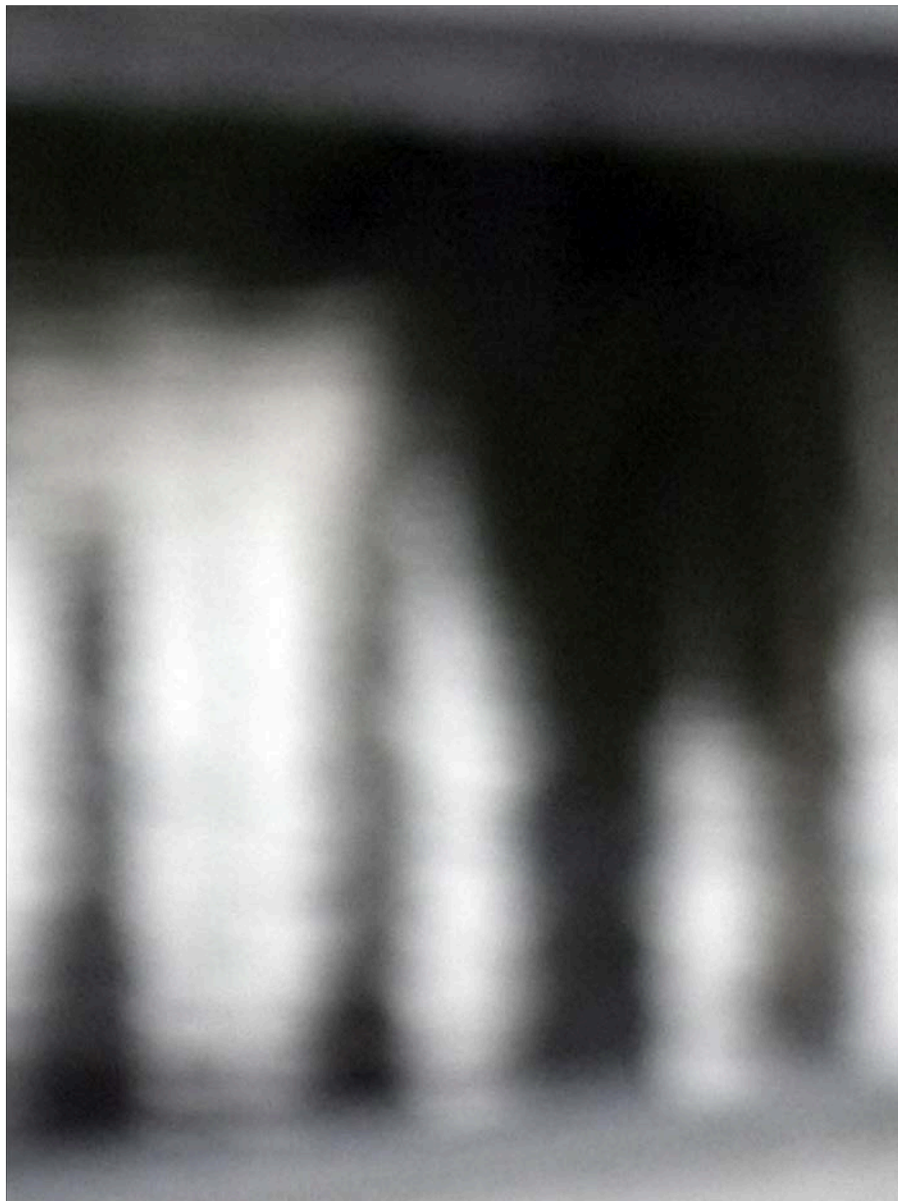
Videostills • series, 6-part • Lambda Print • *Alu-Dibond, acrylic glass* • 60x80





o.T. | 2005

photography • digital • Lambda Print • *Alu-Dibond, acrylic glass* • 60x80



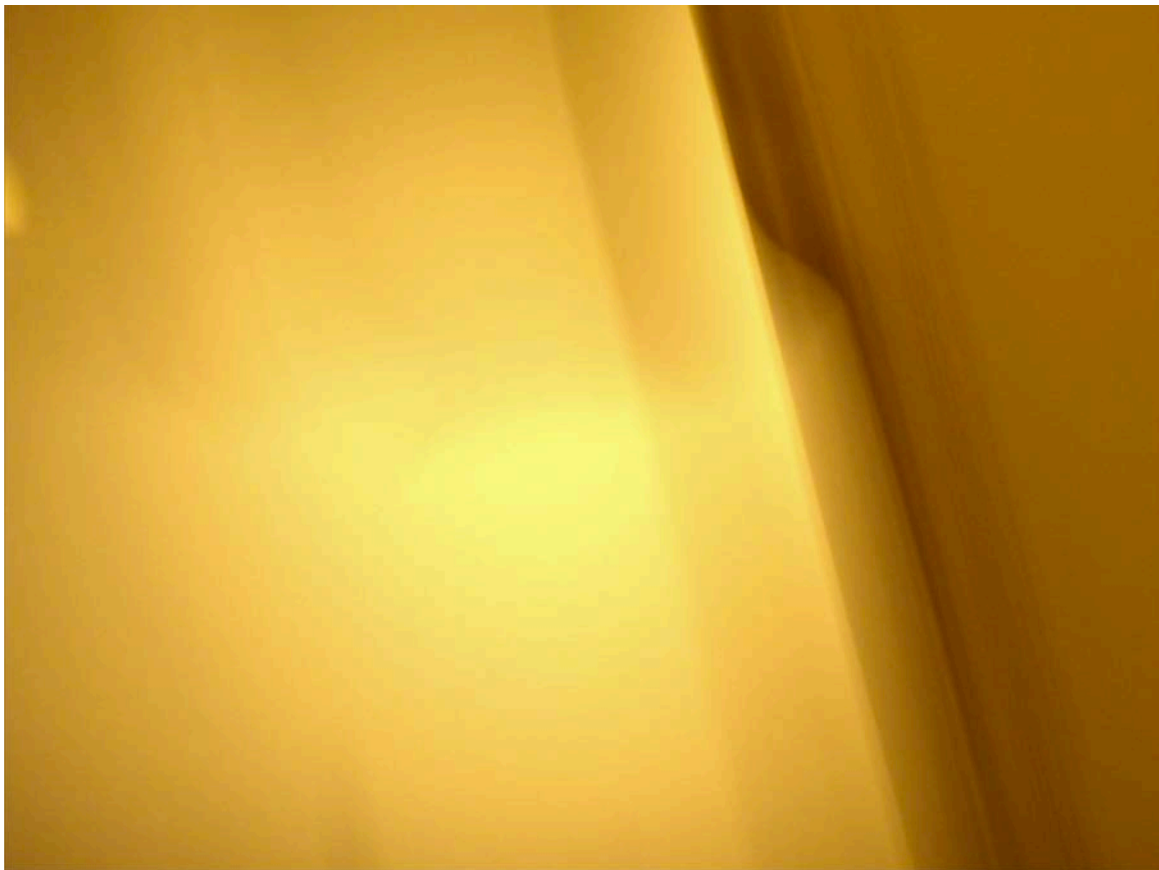
o.T. | 2005

photography • digital • Lambda Print • *Alu-Dibond, acrylic glass* • 60x80



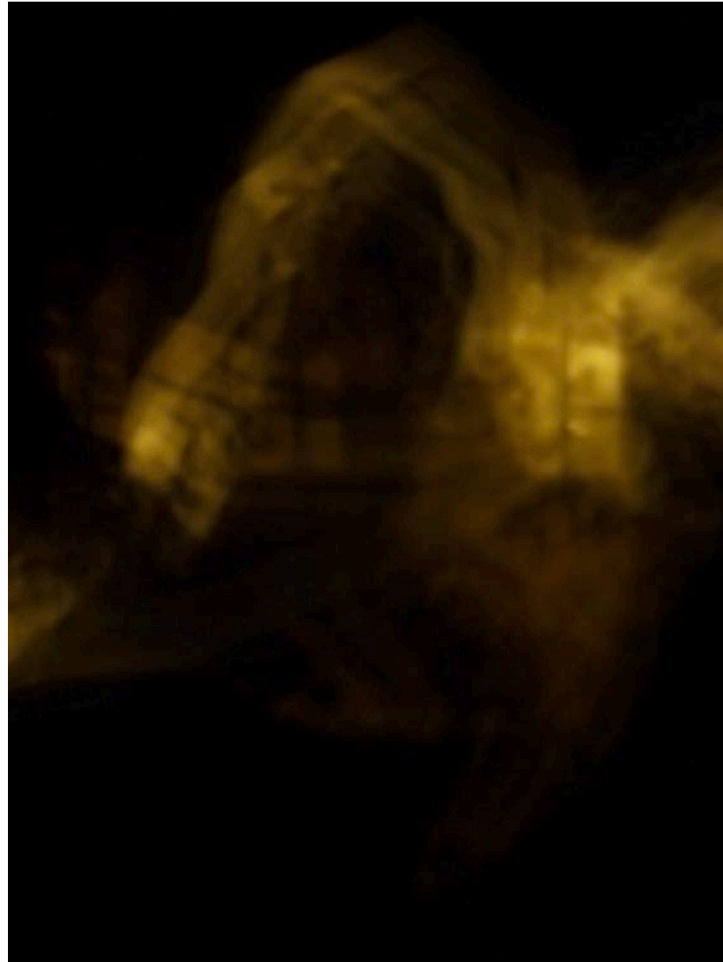
corner#01 | 2005

photography • digital • Lambda Print • *Alu-Dibond, acrylic glass* • 60x80



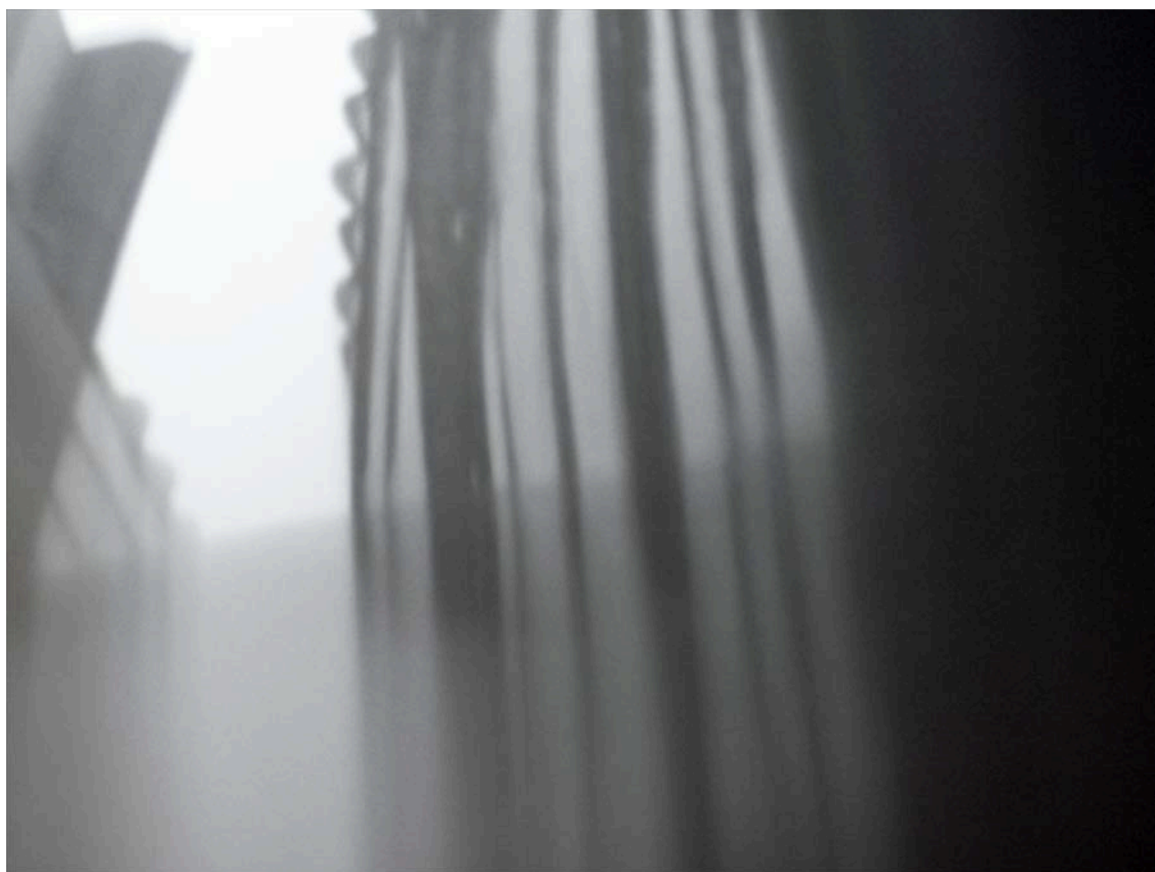
window | 2006

photography • digital • 2-part • Lambda Print • *Alu-Dibond, acrylic glass* • 60x80



o.T. | 2006

photography • digital • Lambda Print • *Alu-Dibond, acrylic glass* • 80x120



o.T. | 2006

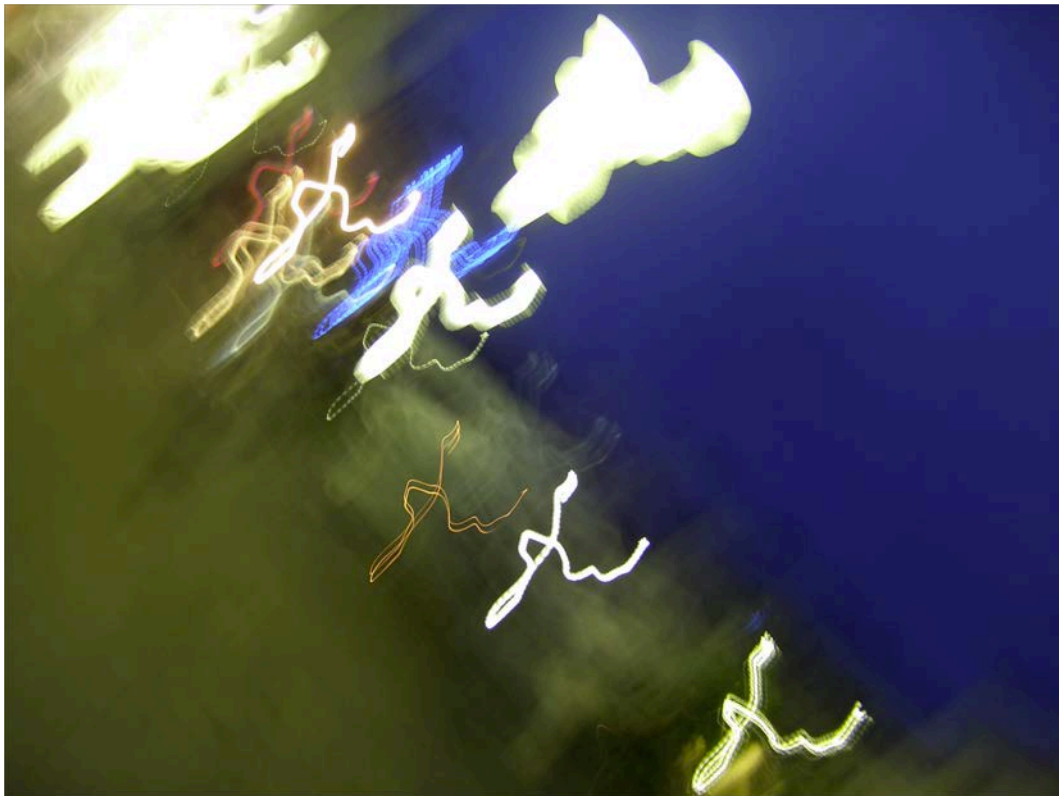
photography • digital • Lambda Print • *Alu-Dibond, acrylic glass* • 60x80



d12_#01 | 2007

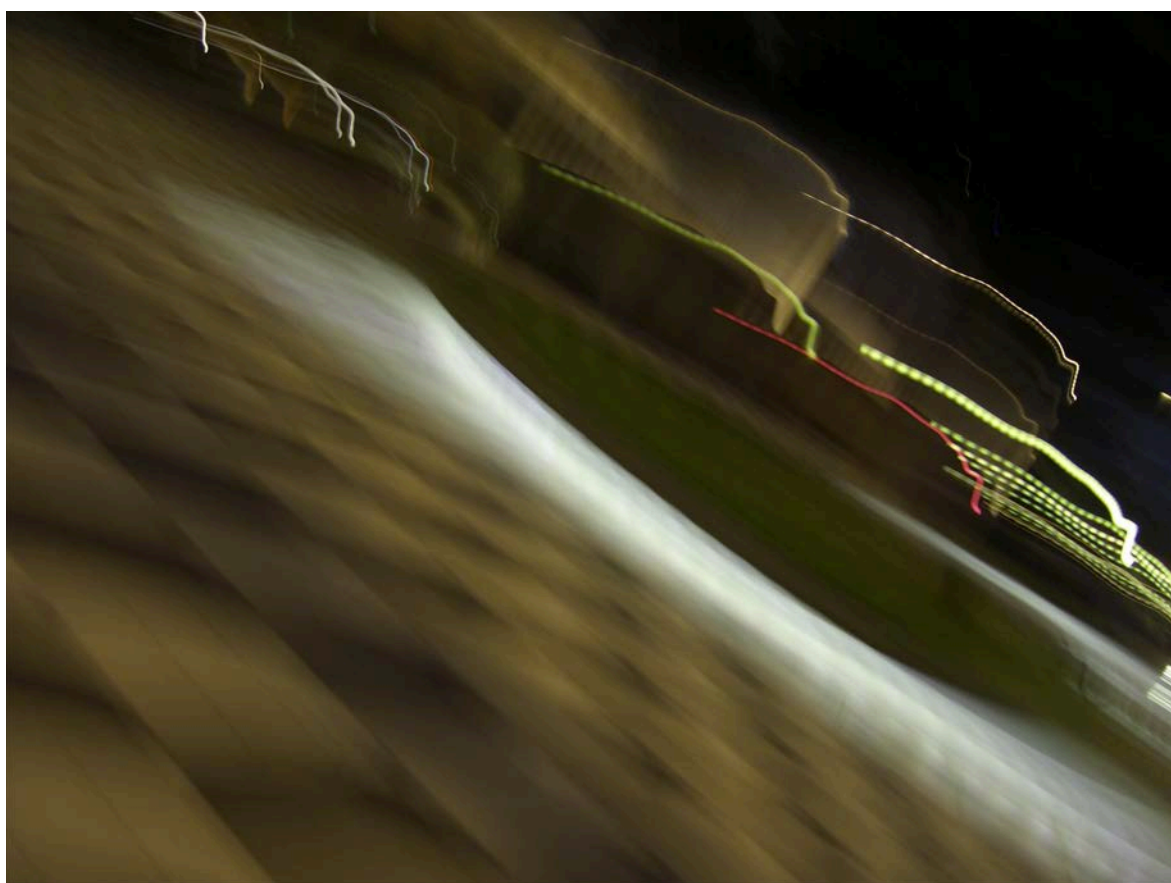
photography • digital • 3-part • Lambda Print • *Alu-Dibond, acrylic glass* • 60x80

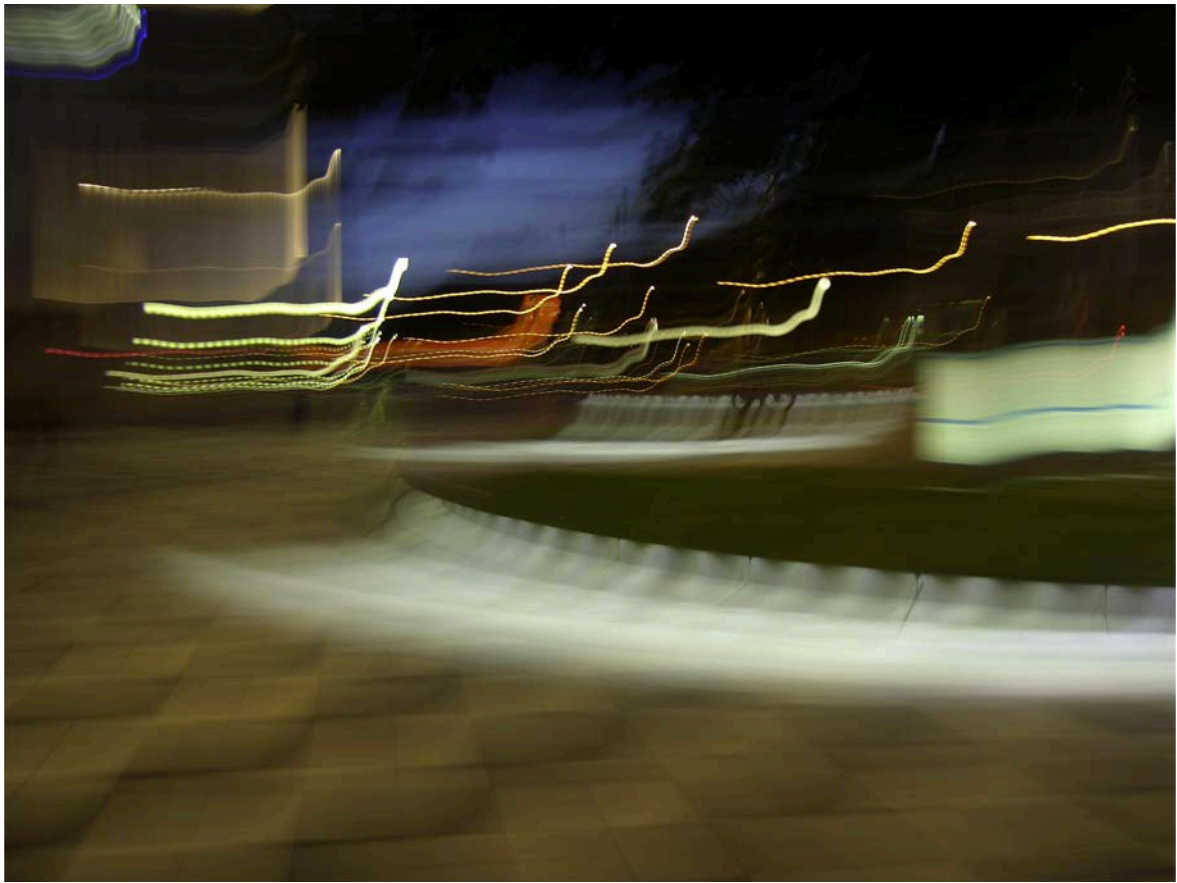




d12_#02 | 2007

photography • digital • 2-part • Lambda Print • *Alu-Dibond, acrylic glass* • 60x80





Contact

internet: www.matthiasfitz.de
e-mail: info@matthiasfitz.de
tel.: 0049-(0)30-49803063

